

# School Health Index: CHADWICK SCHOOL

## School Health Index Module Results

Thank you for completing the SHI. Above are graphical representations of your school's responses across the modules. On these graphs, you can note areas that you are making progress and areas that need attention. On the graph, the Y axis is your selected response, 3-Fully in Place, 2-Partially in Place, 1-Under Development or 0-Not in Place. This graph also shows the average scores across your district and state, as well as the maximum score possible.

Module	Score
Module 1: School Health and Safety Policies and Environment	57/57
Module 2: Health Education	32/33
Module 3: Physical Education and Other Physical Activity Programs	68/72
Module 4: Nutrition Services	24/30
Module 5: School Health Services	15/15
Module 6: School Counseling, Psychological, and Social Services	6/6
Module 7: Health Promotion for Staff	21/21
Module 8: Family and Community Involvement	18/18



**Module 1: School Health and Safety Policies and Environment**

Completed

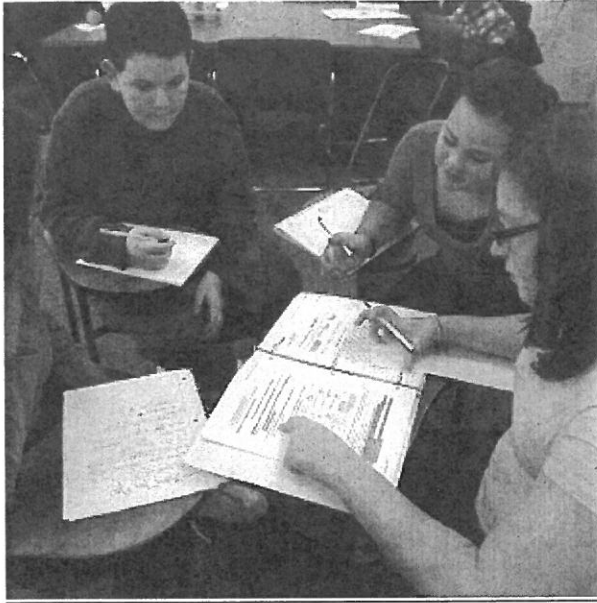
## MODULE SUMMARY

---

### Question

---

CC.1 Representative school health committee or team	3 - Fully in Place
CC.2 Written school health and safety policies	3 - Fully in Place
CC.3 Communicate health and safety policies to students, parents, staff members, and visitors	3 - Fully in Place
CC.4 Positive school climate	3 - Fully in Place
CC.5 Overcome barriers to learning	3 - Fully in Place
CC.6 Enrichment experiences	3 - Fully in Place
CC.7 Local wellness policies	3 - Fully in Place
CC.8 Standard precautions policy	3 - Fully in Place
CC.9 Professional development on meeting diverse needs of students	3 - Fully in Place
CC.10 Prevent harassment and bullying	3 - Fully in Place
CC.11 Active supervision	3 - Fully in Place
CC.12 Written crisis response plan	3 - Fully in Place
CC.13 Student involvement in decision-making	3 - Fully in Place
PA.1 Access to physical activity facilities outside school hours	3 - Fully in Place
PA.2 Adequate physical activity facilities	3 - Fully in Place



## Module 2: Health Education

Completed

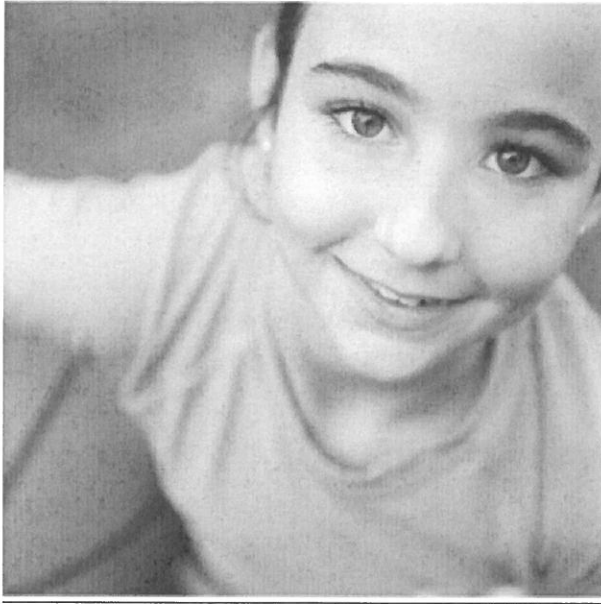
## MODULE SUMMARY

---

### Question

---

CC.1 Required health education course	3 - Fully in Place
CC.2 Health education grading	3 - Fully in Place
CC.3 Sequential health education curriculum consistent with standards	3 - Fully in Place
CC.4 Active learning strategies	3 - Fully in Place
CC.5 Opportunities to practice skills	3 - Fully in Place
CC.6 Culturally-appropriate activities and examples	3 - Fully in Place
CC.7 Assignments encourage student interaction with family and community	3 - Fully in Place
CC.8 Credentialed health education teachers	3 - Fully in Place
CC.9 Professional development in health education	3 - Fully in Place
CC.10 Professional development in delivering curriculum	3 - Fully in Place
CC.11 Professional development in classroom management techniques	3 - Fully in Place
PA.1 Essential topics on physical activity	2 - Partially in Place
N.1 Essential topics on healthy eating	3 - Fully in Place



**Module 3: Physical Education and Other Physical Activity Programs**

Completed

## MODULE SUMMARY

---

### Question

---

PA.1 225 minutes of physical education per week	3 - Fully in Place
PA.2 Years of physical education	3 - Fully in Place
PA.3 Time requirement for length of physical education class	3 - Fully in Place
PA.4 Adequate teacher/student ratio	2 - Partially in Place
PA.5 Sequential physical education curriculum consistent with standards	3 - Fully in Place
PA.6 Information and materials for physical education teachers	3 - Fully in Place
PA.7 Physical education grading	3 - Fully in Place
PA.8 Prohibit exemptions or waivers for physical education	3 - Fully in Place
PA.9 Students active at least 50% of class time	3 - Fully in Place
PA.10 Individualized physical activity and fitness plans	2 - Partially in Place
PA.11 Health-related physical fitness	3 - Fully in Place
PA.12 Promote community physical activities	2 - Partially in Place
PA.13 Licensed physical education teachers	3 - Fully in Place
PA.14 Address special health care needs	3 - Fully in Place
PA.15 Physical education safety practices	3 - Fully in Place
PA.16 Professional development for teachers	3 - Fully in Place
PA.17 Participation in intramural programs or physical activity clubs	3 - Fully in Place
PA.18 Availability of interscholastic sports	3 - Fully in Place
PA.19 Promotion or support of walking and bicycling to school	3 - Fully in Place
PA.20 Availability of before- and after-school physical activity opportunities	3 - Fully in Place
PA.21 Availability of physical activity breaks in classrooms	3 - Fully in Place
PA.22 Training requirements for sports coaches	3 - Fully in Place
PA.23 Physical activity facilities meet safety standards	2 - Partially in Place

Question

PA.24 Athletics safety requirements

3 - Fully in Place





#### **Module 4: Nutrition Services**

Completed

## MODULE SUMMARY

---

### Question

---

N.1 Breakfast and lunch programs.	3 - Fully in Place
N.2 Variety of offerings in school meals.	2 - Partially in Place
N.3 Healthy food purchasing and preparation practices.	2 - Partially in Place
N.4 Venues outside the cafeteria offer fruits and vegetables	2 - Partially in Place
N.5 Promote healthy food and beverage choices using Smarter Lunchroom techniques	2 - Partially in Place
N.6 Adequate time to eat school meals	3 - Fully in Place
N.7 Collaboration between nutrition services staff members and teachers	3 - Fully in Place
N.8 Annual continuing education and training requirements for school nutrition services staff.	3 - Fully in Place
N.9 Clean, safe, pleasant cafeteria	2 - Partially in Place
N.10 Preparedness for food emergencies	3 - Fully in Place
N.11 Farm to School activities	2 - Partially in Place

## Question

---

PA.3 Prohibit using physical activity as punishment	3 - Fully in Place
N.1 Prohibit using food as reward or punishment	3 - Fully in Place
N.2 Access to free drinking water	3 - Fully in Place
N.3 All foods sold during the school day meet the USDA s Smart Snacks in School nutrition standards.	3 - Fully in Place
N.4 All beverages sold during the school day meet the USDA s Smart Snacks in School nutrition standards.	3 - Fully in Place
N.5 At the high school level, beverages sold during the school day exceed the USDA s Smart Snacks in School nutrition standards.	3 - Fully in Place
N.6 All foods and beverages served and offered during the school day meet the USDA s Smart Snacks in School nutrition standards.	3 - Fully in Place
N.7 All foods and beverages sold during the extended school day meet the USDA s Smart Snacks in School nutrition standards.	3 - Fully in Place
N.8 All food and beverages served and offered during the extended school day meet the USDA s Smart Snacks in School nutrition standards.	3 - Fully in Place
N.9 Fundraising efforts during and outside school hours meet the USDA s Smart Snacks in School nutrition standards.	3 - Fully in Place
N.10 Food and beverage advertising and promotion.	3 - Fully in Place



## **Module 5: School Health Services**

Completed

## MODULE SUMMARY

---

### Question

---

CC.1 Health services provided by a full-time school nurse	3 - Fully in Place
CC.2 Health and safety promotion for students and families	3 - Fully in Place
CC.3 Collaborate with other school staff members	3 - Fully in Place
CC.4 Identify and track students with chronic health conditions	3 - Fully in Place
CC.5 Implement a referral system	3 - Fully in Place
CC.6 Student health information	3 - Fully in Place
CC.7 Consulting school health physician	3 - Fully in Place
N.1 Food allergy management plan	3 - Fully in Place



**Module 6: School Counseling, Psychological, and Social Services**

Completed

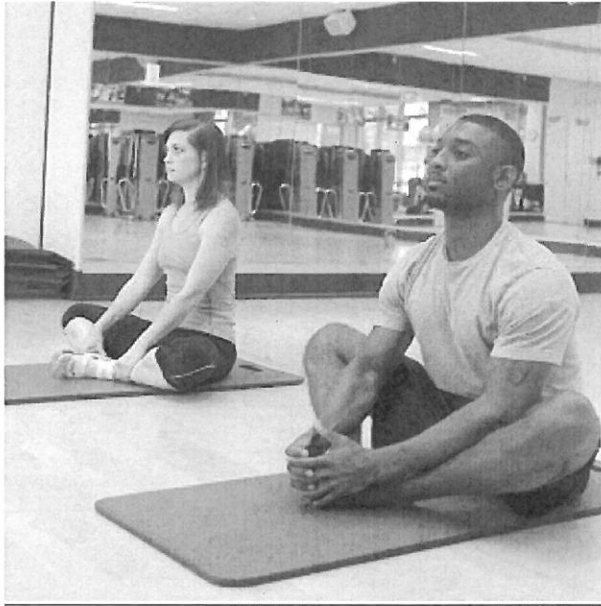
## MODULE SUMMARY

---

### Question

---

CC.1 Counseling, psychological, and social services provided by a full-time counselor, social worker, and psychologist	3 - Fully in Place
CC.2 Health and safety promotion and treatment	3 - Fully in Place
CC.3 Collaborate with other school staff members	3 - Fully in Place
CC.4 Identify and track students with emotional, behavioral, and mental health needs	3 - Fully in Place
CC.5 Establish referral system	3 - Fully in Place
CC.6 Aid students during transitions	3 - Fully in Place



**Module 7: Health Promotion for Staff**

*Completed*



## MODULE SUMMARY

---

### Question

---

CC.1 Health education for staff members	3 - Fully in Place
CC.2 Health assessments for staff members	3 - Fully in Place
CC.3 Promote staff member participation	3 - Fully in Place
CC.4 Stress management programs for staff	2 - Partially in Place
CC.5 Breastfeeding policy	3 - Fully in Place
PA.1 Programs for staff members on physical activity/fitness	3 - Fully in Place
N.1 Programs for staff members on healthy eating/weight management	3 - Fully in Place
N.2 All foods served and sold to staff meet the USDA s Smart Snacks in School nutrition Standards	3 - Fully in Place
N.3/PA.2 Modeling healthy eating and physical activity behaviors	3 - Fully in Place



**Module 8: Family and Community Involvement**

Completed

## MODULE SUMMARY

---

### Question

---

CC.1 Communication with families	3 - Fully in Place
CC.2 Effective parenting strategies	3 - Fully in Place
CC.3 Family and community involvement in school decision making	3 - Fully in Place
CC.4 Family and community volunteers	3 - Fully in Place
CC.5 Family involvement in learning at home	3 - Fully in Place
CC.6 Family and community access to school facilities	3 - Fully in Place
N.1 Student and family involvement in the school meal programs and other foods and beverages sold, served and offered on school campus	3 - Fully in Place